

# 25 Beautiful KITCHENS

MORE REAL KITCHENS THAN ANY OTHER MAGAZINE

## CABINET MATERIALS EXPLAINED

FROM VENEERS TO VINYLs –  
HOW TO SPOT WHAT'S WHAT

ALL  
UNIQUE  
DESIGNS

### RANGE COOKERS

Professional looks  
for serious cooks

### DRESS TO IMPRESS

Add zest to your kitchen  
with lime accessories

WIN  
RANGEMASTER  
APPLIANCES  
WORTH £5,000

May 2007 £3.75

SOLD AS PART OF A MULTIPACK.  
NOT FOR RESALE

**INSIDE** Cut-out-and-keep planning guide: Part one – Getting started



# A brush with fate

Louise Osborne and Gregory Knight found the right colour for their kitchen, but it was more by accident than design

Louise Osborne and her partner Gregory Knight share their beautiful Victorian manor house with daughter Olivia, 10, teenagers Victoria and Charlie and newly arrived baby Sophia. With such a large family, the kitchen was naturally always busy, but until very recently, it couldn't quite accommodate the rigours of a fast-paced family life. 'The building itself is quite large, but the kitchen we had inherited was surprisingly small in proportion to the rest of the property,' explains Gregory. 'Eventually we came to realise that unless we took steps to enlarge the space, it would always restrict our day-to-day lives, so we decided to make some drastic structural changes.'

With this in mind, a generous extension was conceived that would house a new dining area and increase the floor space of the existing kitchen by a third. It was also decided that additional space should be reclaimed from a disused pantry to maximise the potential of the new layout. Three months of building work ensued and it was during this time that Louise and Gregory commissioned kitchen designer Mick Bridger to transform their hopes for the new kitchen into reality. 'We wanted a very traditional kitchen that incorporated lots of freestanding furniture, particularly an island unit. Our last kitchen was blessed with one so we know how beneficial they can be. Not only are they very practical, but with such a large family, it's nice to have somewhere to congregate and spend time together,' smiles Louise.

Louise and Gregory were keen for the kitchen to absorb the style of its surroundings. 'The house is very much shabby chic and it was important to us that the kitchen followed suit so that it would integrate with the decor in the rest of the building,' explains Gregory.

With this in mind, the couple had the units painted several times to get the right colour combination. 'Changing our minds so often did create a few problems at the time, but the reason we were so particular is that we didn't want a cream kitchen. However, that's exactly what we have now. The different layers of paint have resulted in a lovely colour combination that we really like and probably couldn't have achieved if we'd tried,' says Louise, 'so now we look on it as more of a blessing in disguise.'

BK

The room's traditional theme is emphasised by the butler sink and bridge mixer tap. Drawers and cupboards were made in a variety of shapes and sizes in order to reinforce the idea of freestanding furniture

*Shaker-inspired cabinet fronts and a distressed painted finish combine to create a kitchen that looks as if it has evolved over time and acquired the genuine patina of use. The impressive island and overhead batterie de cuisine form the main focus of the room. The slate floor tiles came from Fired Earth*



With such a large family, it's nice to have somewhere



*Gregory's favourite appliance is the Aga because it enables him and Louise to cook with versatility and efficiency, especially when they are entertaining. The island has two open ends for display purposes, while utensils hang from a batterie de cuisine above for added visual interest. 'It was important to ensure the kitchen was in keeping with the character of the house,' explains Louise. The multi-coloured wall tiles came from Fired Earth*



← Louise keeps her dinner plates on display in this wall-mounted rack. The fact that they are not stacked on top of one another helps to protect them from chipping. Similar dinnerware is available from The Country Cupboard

→ To create the look of shabby chic that Louise was so keen to achieve, she got M Carter & Sons of Harlow to 'age' the cabinetry. Several shades of cream paint were applied over a layer of blue and then sanded back. The handles came from Finesse Fittings



congregate and spend time together



*“The island has another sink, which is very handy when I’m preparing vegetables or when we need extra capacity because there’s a lot going on.”*  
Louise Osborne

Louise and Gregory’s manor house was built during the 1700s and the couple’s new kitchen fits in perfectly with its period style



**Where to buy** Aga: 0845 712 5207 Brass and Traditional Sinks: 01291 650738 Finesse Fittings: 01207 599754 Fired Earth: 0845 366 0400 M Carter & Sons of Harlow: 01279 301189 Neff: 0870 513 3090 Perrin & Rowe: 01708 526361 The Country Cupboard: 01296 748755 Villeroy & Boch: 020 8875 6060

## THE KITCHEN FILE

### DESIGN & CABINERY

- Mick Bridger at **Handmade Kitchen Co.**, 18A Woodfield Terrace, High Road, Thornwood Common, Epping, Essex CM16 6LL (01992 577998) [www.handmadekitchen.co.uk](http://www.handmadekitchen.co.uk)
- Bespoke handpainted reclaimed pine furniture

### WORKTOPS

- 30mm Blue Pearl granite. Price per linear m **£245**
- 65mm European oak. Price per sq m **£646**

### SINKS & TAPS

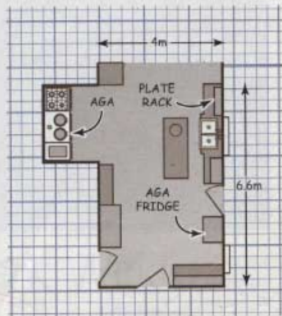
- Brittany 3383 single-bowl farmhouse sink, Brass & Traditional Sinks **£430**
- Luna undermounted single-bowl ceramic sink in white, Villeroy & Boch **£375**
- 4183PF Ionian sink mixer tap in pewter with ceramic handles, Perrin & Rowe **£383**
- 4320PF Etruscan monobloc mixer tap in pewter, Perrin & Rowe **£176**

### APPLIANCES (shown)

- Four-oven natural gas-fired Aga and module, from **£10,000**
- H5642 built-in microwave, Neff **£423**
- Black Aga fridge **£2,675**

### APPLIANCES (not shown)

- Built-under freezer, Neff **£442**
- Fully integrated dishwasher, Neff **£807**
- Fully integrated washing machine, Neff **£901**



### GUIDE PRICE

- Starting price for a Handmade kitchen **£12,000**